



Noise Monitoring Result

Day Time (0700 - 1900hrs on normal weekdays)

Location: M1a - Harbour Road Sports Centre

Date	Time	Weather	Measurement Noise Level			Baseline Level	Construction Noise Level	Limit Level
			Leq	L10	L90	Leq	Leq	Leq
Unit: dB(A), (30-min)								
28/07/14	9:25	Fine	74.6	77.0	70.0	72	71	75
04/08/14	16:42	Fine	74.6	76.5	71.5	72	71	75
12/08/14	9:45	Fine	74.3	76.5	70.0	72	70	75
18/08/14	9:10	Fine	74.2	76.5	70.5	72	70	75
25/08/14	9:29	Fine	76.7	80.0	72.0	72	75	75

Location: M2b - Noon-day gun area

Date	Time	Weather	Measurement Noise Level			Baseline Level	Construction Noise Level	Limit Level
			Leq	L10	L90	Leq	Leq	Leq
Unit: dB(A), (30-min)								
28/07/14	10:10	Fine	72.8	75.0	69.0	68	71	75
05/08/14	9:28	Fine	78.1	80.0	74.0	68	78	75
12/08/14	10:35	Fine	73.0	74.5	69.0	68	72	75
18/08/14	10:32	Fine	72.1	74.0	69.5	68	70	75
25/08/14	10:36	Fine	72.7	73.5	68.5	68	71	75

Location: M3a - Tung Lo Wan Fire Station

Date	Time	Weather	Measurement Noise Level			Baseline Level	Construction Noise Level	Limit Level
			Leq	L10	L90	Leq	Leq	Leq
Unit: dB(A), (30-min)								
28/07/14	10:54	Fine	66.4	67.5	64.5	69	66	75
05/08/14	10:56	Cloudy	67.2	68.5	65.5	69	67	75
11/08/14	15:47	Fine	66.5	68.0	64.5	69	67	75
18/08/14	11:18	Fine	67.0	68.0	65.5	69	67	75
25/08/14	14:41	Fine	64.9	66.0	63.0	69	65	75

Location: M4b - Victoria Centre

Date	Time	Weather	Measurement Noise Level			Baseline Noise Level	Construction Noise Level	Limit Level
			Leq	L10	L90	Leq	Leq	Leq
Unit: dB(A), (30min)								
28/07/14	13:00	Fine	67.5	68.5	66.0	67	54	75
05/08/14	13:00	Fine	69.0	70.0	66.5	67	64	75
11/08/14	15:05	Fine	70.1	72.0	67.0	67	67	75
18/08/14	13:00	Fine	68.8	70.0	67.0	67	63	75
25/08/14	11:23	Fine	67.8	69.0	66.0	67	58	75

Location: M5b - City Garden

Date	Time	Weather	Measurement Noise Level			Baseline Level	Construction Noise Level	Limit Level
			Leq	L10	L90	Leq	Leq	Leq
Unit: dB(A), (30min)								
28/07/14	13:55	Fine	69.7	70.5	68.0	68	65	75
05/08/14	13:52	Fine	73.5	75.0	69.5	68	72	75
11/08/14	14:21	Fine	71.9	74.0	68.5	68	70	75
18/08/14	13:58	Fine	70.8	71.5	69.5	68	68	75
25/08/14	13:04	Fine	71.7	73.5	68.0	68	69	75

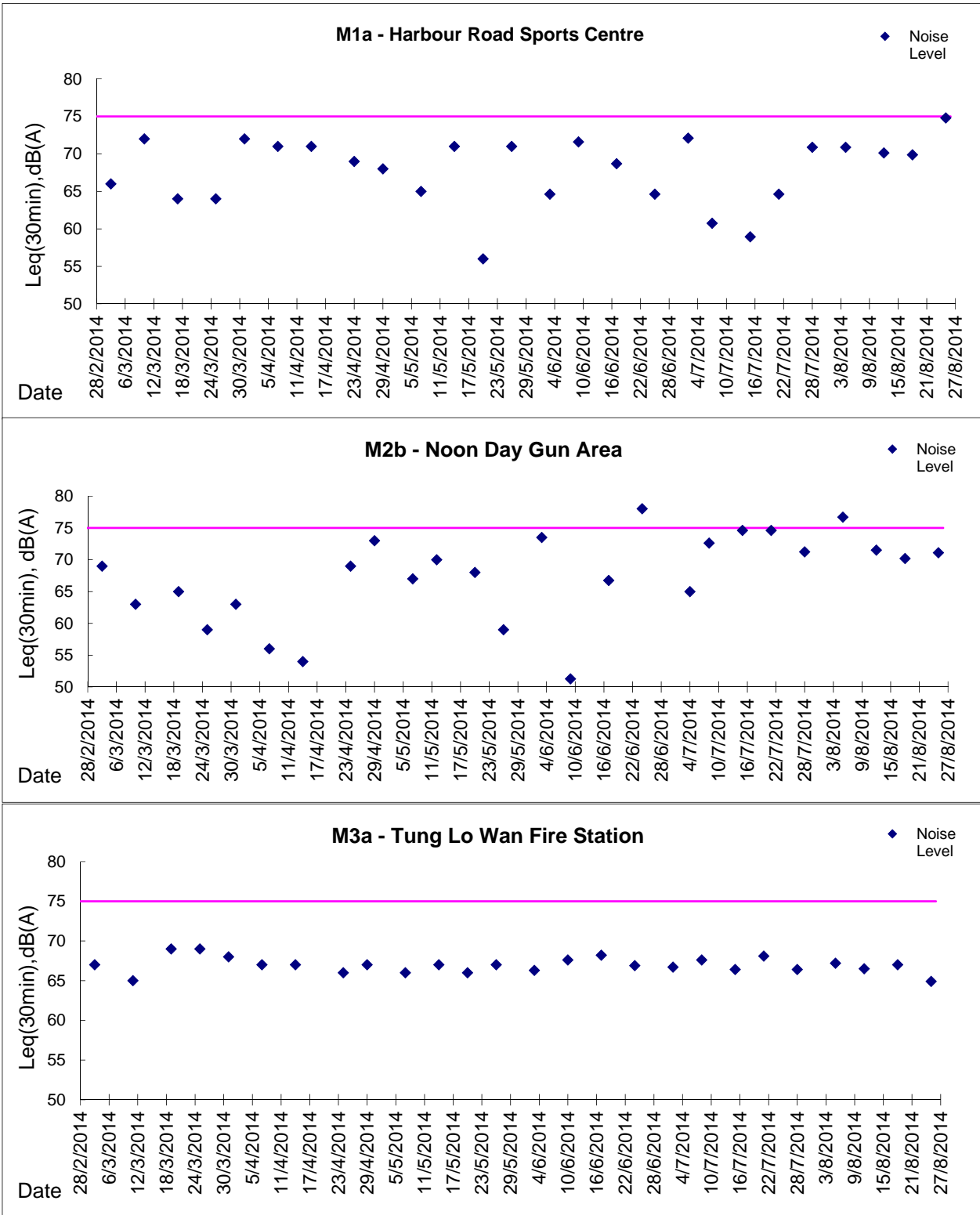
Location: M6 - HK Baptist Church Henrietta Secondary School

Date	Time	Weather	Measurement Noise Level			Baseline Level	Construction Noise Level	Limit Level
			Leq	L10	L90	Leq	Leq	Leq
Unit: dB(A), (30-min)								
28/07/14	15:11	Fine	73.7	75.0	72.0	71	71	70
05/08/14	14:32	Fine	73.2	74.0	71.5	71	70	70
11/08/14	13:38	Fine	73.3	74.5	71.5	71	70	70
18/08/14	14:45	Fine	71.2	73.0	68.0	71	62	70
25/08/14	13:45	Fine	73.4	74.5	71.5	71	70	70



Graphic Presentation of Noise Monitoring Result

Day Time (0700 - 1900hrs on normal weekdays)





Graphic Presentation of Noise Monitoring Result

Day Time (0700 - 1900hrs on normal weekdays)

